

## Port Authority® Cascade Waterproof Jacket J322

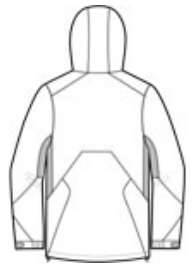


For those days when the rain just won't stop. Our Cascade Waterproof Jacket is fully seam-sealed with waterproof zippers. This parka-length essential has modern good looks thanks to its trend-right colors, contrast zippers and colorblocking.

- 100% nylon shell
- 3000MM fabric waterproof rating
- Waterproof zippered chest pocket
- Waterproof front zippered pockets
- Hood with drawcord and toggles for adjustability
- Storm flap with snaps and hook and loop closure
- Two-way zipper
- Port Pocket™ for easy embroidery access
- Self-fabric adjustable tab cuffs with hook and loop closures
- Open hem with drawcord and toggles for adjustability



front



back

### CARE INSTRUCTIONS

Machine wash cold with like colors. Gentle cycle.  
Tumble dry low. Cool iron if needed. Do not dry clean.  
Do not bleach.

### HOW TO MEASURE






**CHEST**  
With arms down at sides, measure around the upper body, under arms and over the fullest part of the chest.

### SIZE CHART

	XS	S	M	L	XL	2XL	3XL	4XL
Chest	32-34	35-37	38-40	41-43	44-46	47-49	50-53	54-57

### COLOR INFORMATION

 Black/ Magnet Grey PMS NTR BLACK CPMS 382 C	 Charge Green/ Magnet Grey	 Imperial Blue/ Black PMS 7691 C
--	--	---